

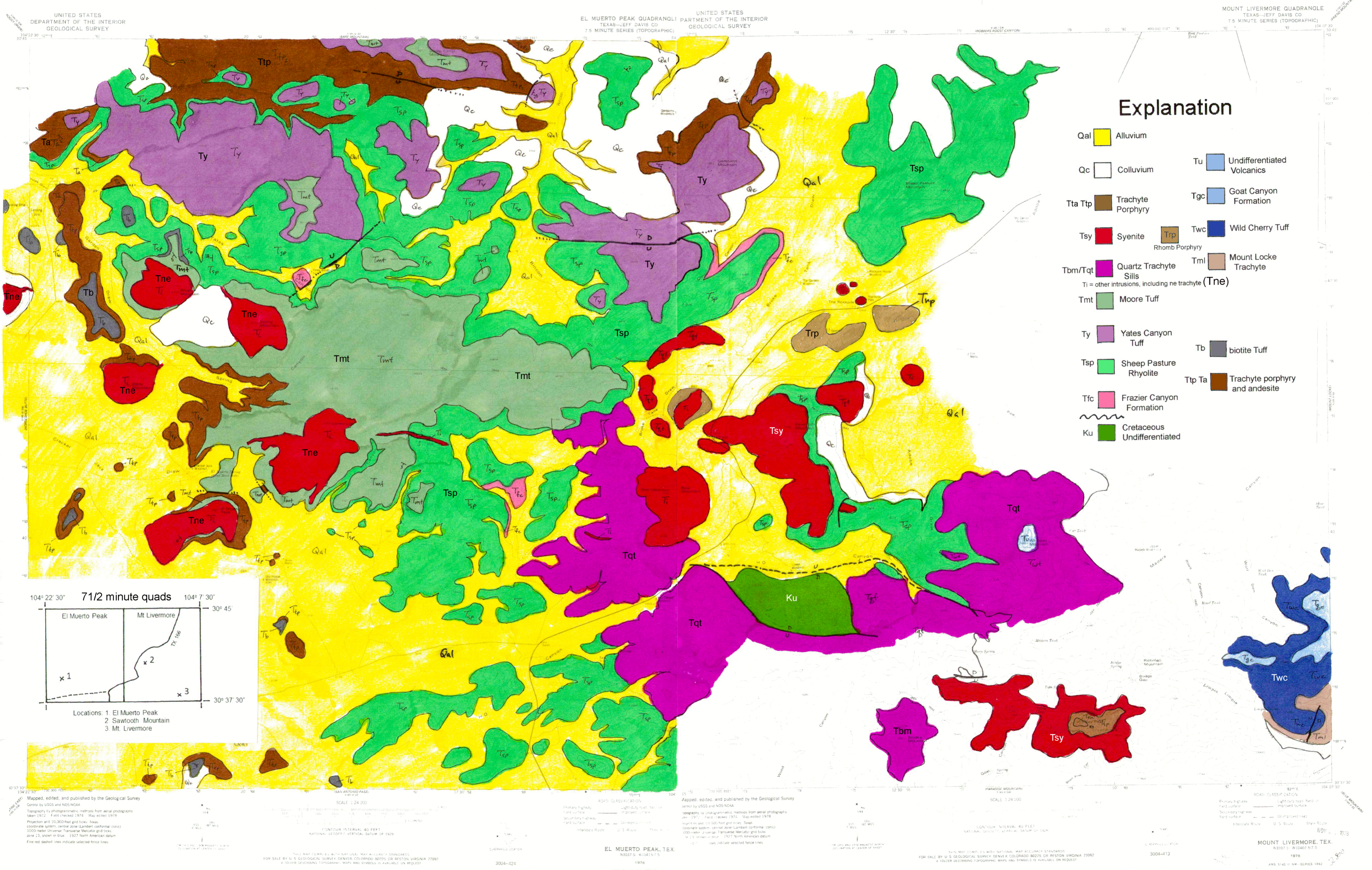
Geologic Map of the Muerto Caldera – Sawtooth Area

Jeff Davis County, Texas

Compiled by Don F. Parker

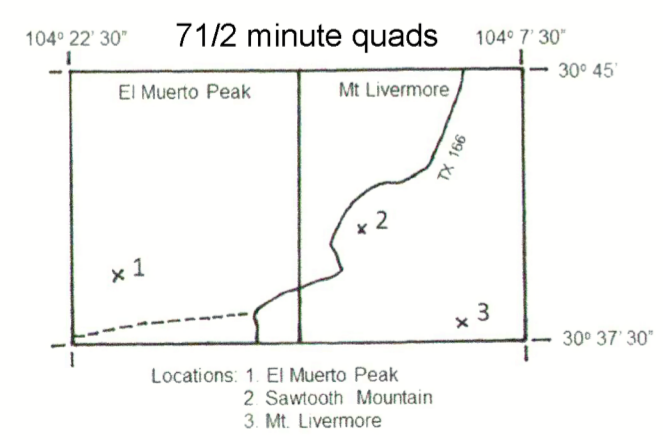
Baylor University 2024

In Memory of Steve M. Hoy (1960-2016)



Explanation

- Qal Alluvium
- Qc Colluvium
- Tta Ttp Trachyte Porphyry
- Tsy Syenite
- Tbm/Tqt Quartz Trachyte Sills
Ti = other intrusions, including ne trachyte (Tne)
- Tmt Moore Tuff
- Ty Yates Canyon Tuff
- Tsp Sheep Pasture Rhyolite
- Tfc Frazier Canyon Formation
- Ku Cretaceous Undifferentiated
- Tu Undifferentiated Volcanics
- Tgc Goat Canyon Formation
- Twc Wild Cherry Tuff
- Tml Mount Locke Trachyte
- Tb biotite Tuff
- Ttp Ta Trachyte porphyry and andesite



Mapped, edited, and published by the Geological Survey
 Control by USGS and NOS/NGA
 Topography by photogrammetric methods from aerial photographs taken 1972. Field checked 1974. Map edited 1978
 Projection and 10,000-foot grid ticks. Texas coordinate system, central zone (Lambert conformal conic) 1000-meter Universal Transverse Mercator grid ticks. Zone 13, spheroid of Clarke, 1927 North American datum. Fine red dashed lines indicate selected fence lines.

Mapped, edited, and published by the Geological Survey
 Control by USGS and NOS/NGA
 Topography by photogrammetric methods from aerial photographs taken 1972. Field checked 1974. Map edited 1978
 Projection and 10,000-foot grid ticks. Texas coordinate system, central zone (Lambert conformal conic) 1000-meter Universal Transverse Mercator grid ticks. Zone 13, spheroid of Clarke, 1927 North American datum. Fine red dashed lines indicate selected fence lines.

ROAD CLASSIFICATION
 Primary highway Light duty road Road of fair surface
 Secondary highway Improved surface
 Tertiary highway Unimproved road
 Interstate Road U.S. Route State Road
 MOUNT LIVERMORE, TEX.
 N3037 S. W. 10412 S. 7.5
 1978
 AMS 5142 91 78 - SERIES 1982